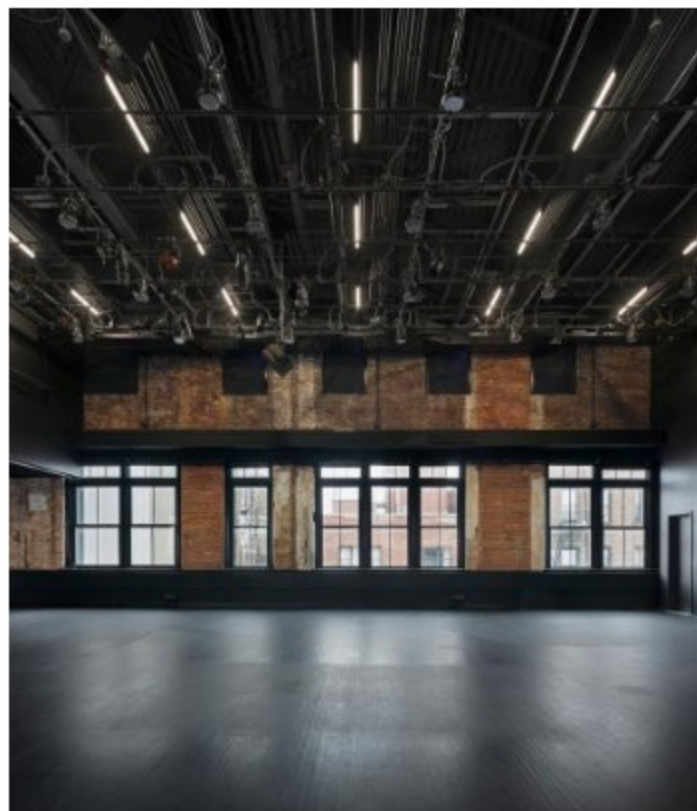




NEWS | 4 DAYS AGO

The Wallpaper\* Architects' Directory turns 20



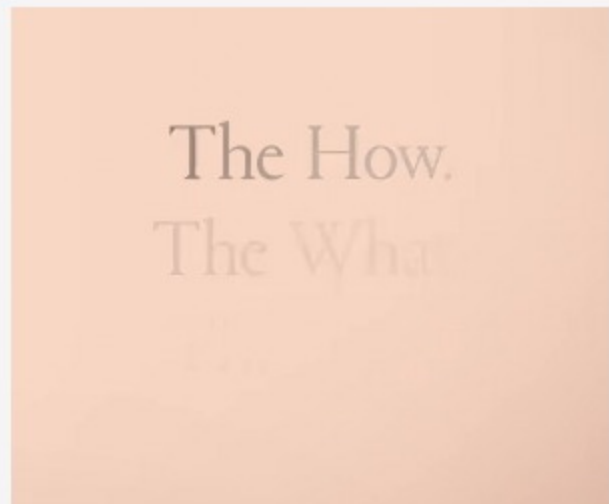
AMERICAN ARCHITECTURE | 4 DAYS AGO

Tour Deborah Berke's community art centre in the East Village



HOUSES | 5 DAYS AGO

Architects Directory alumnus Koffi & Diabate complete Pavillon Teré



## Architects Directory Alumnus: Pavillon Teré by Koffi & Diabate

The Wallpaper\* Architects Directory has turned 20. Conceived in 2000 as our index of emerging architectural talent, this annual listing of promising practices, has, over the years, spanned styles and continents; while always championing the best and most exciting young studios and showcasing inspiring work with an emphasis on the residential realm. To mark the occasion, in the next months, we will be looking back at some of our over-500 alumni, to catch up about life and work since their participation and exclusively launch some of their latest completions. Part of our 2012 Architects Directory, Côte d'Ivoire architecture studio Koffi & Diabate is now working on a variety of projects and scales, and has just completed its latest private residence, Pavillon Teré.



Founded in 2001 through the partnership of young Yale graduate Issa Diabaté and established Côte d'Ivoire architect Guillaume Koffi, Koffi & Diabaté have made their reputation through their contemporary approach to traditional techniques. One of the firm's most recent projects is the TÉRÉ Pavilion, a second home located in the coastal city of Assinie-Mafia. The architects describe the location as an 'idyllic environment' that is frequented by those looking to escape the noise and bustle of Abidjan, the country's largest city, about 100km to the west.

The new house is defined by its use of traditional construction methods, notably rammed earth walls. Carefully orientated to keep the internal spaces shaded from direct sunlight, the earth walls are built up in layers, with subtly varying colour pigmentation and a warm, soft finish. Junctions and details are kept simple throughout, with steel and hardwood frames and terrazzo flooring, while the entire structure is oversailed by a high sloped roof in corrugated metal with a wooden frame.

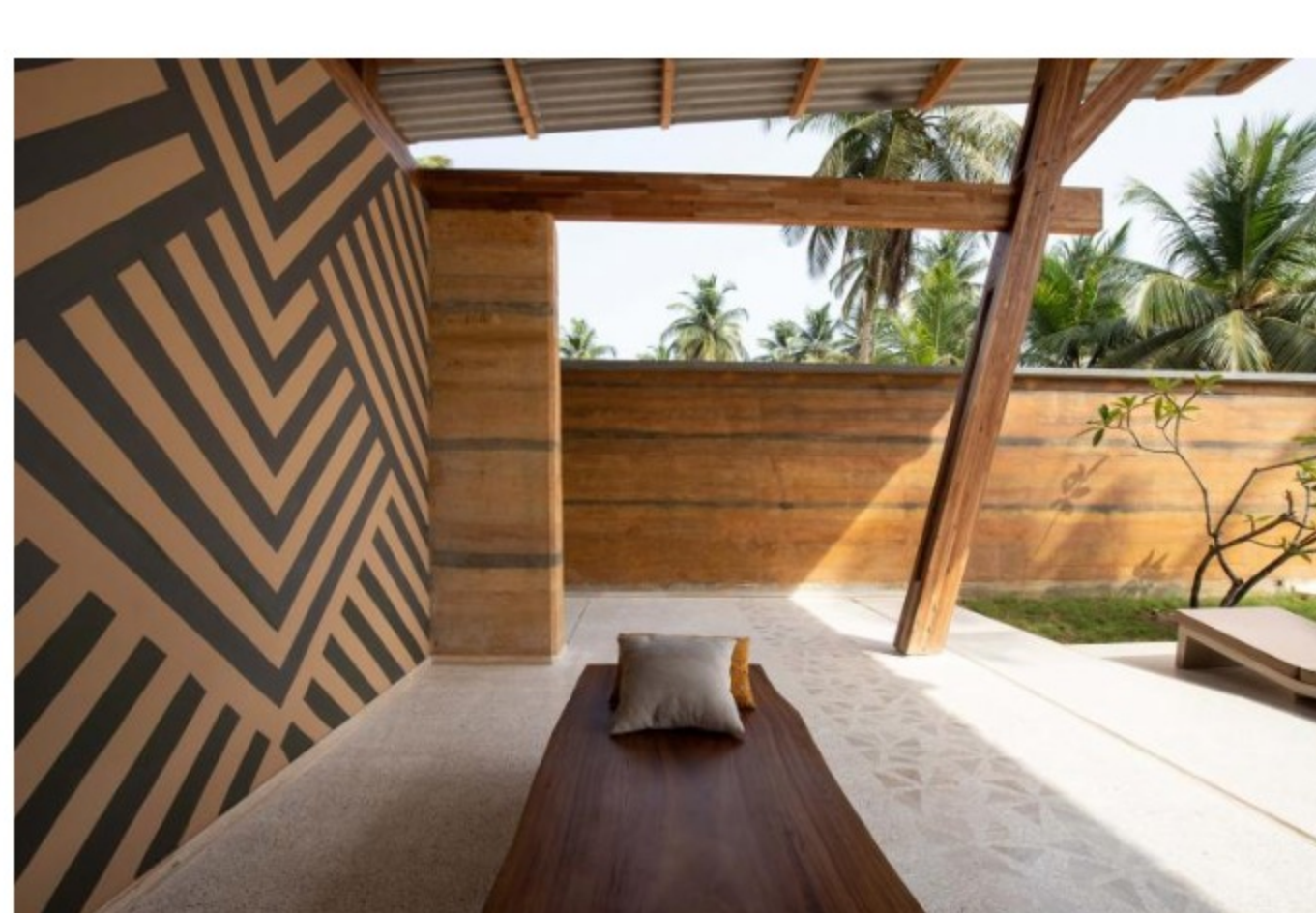
There are climactic reasons for this arrangement, as the space above the dropped ceiling allows air to circulate and cool the space. Both wood and stone were locally sourced, with higher quality hardwoods used for the bespoke furniture and internal sculpted panels. Furnishings use printed fabrics from Congo, Mali and Côte d'Ivoire.



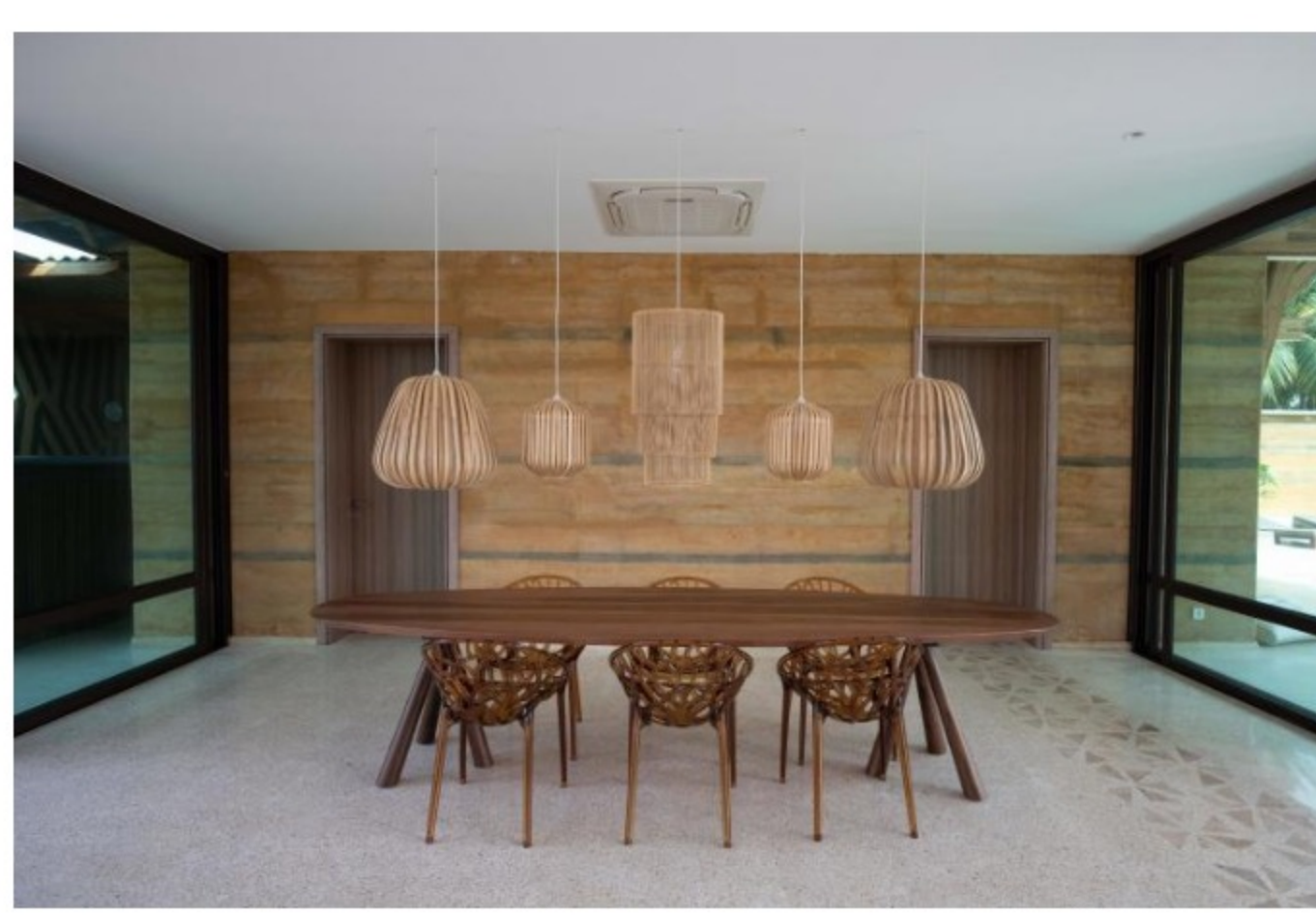
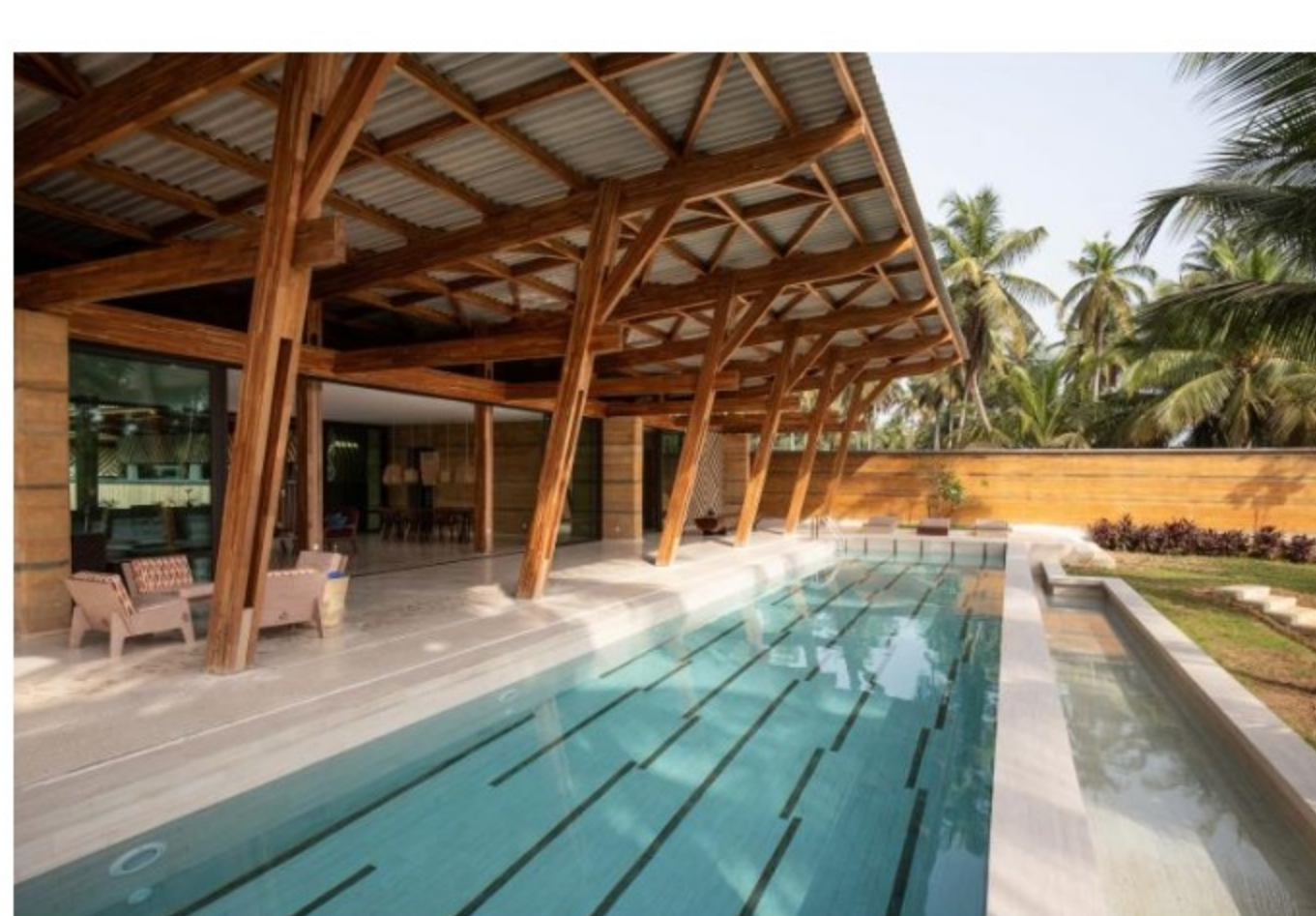
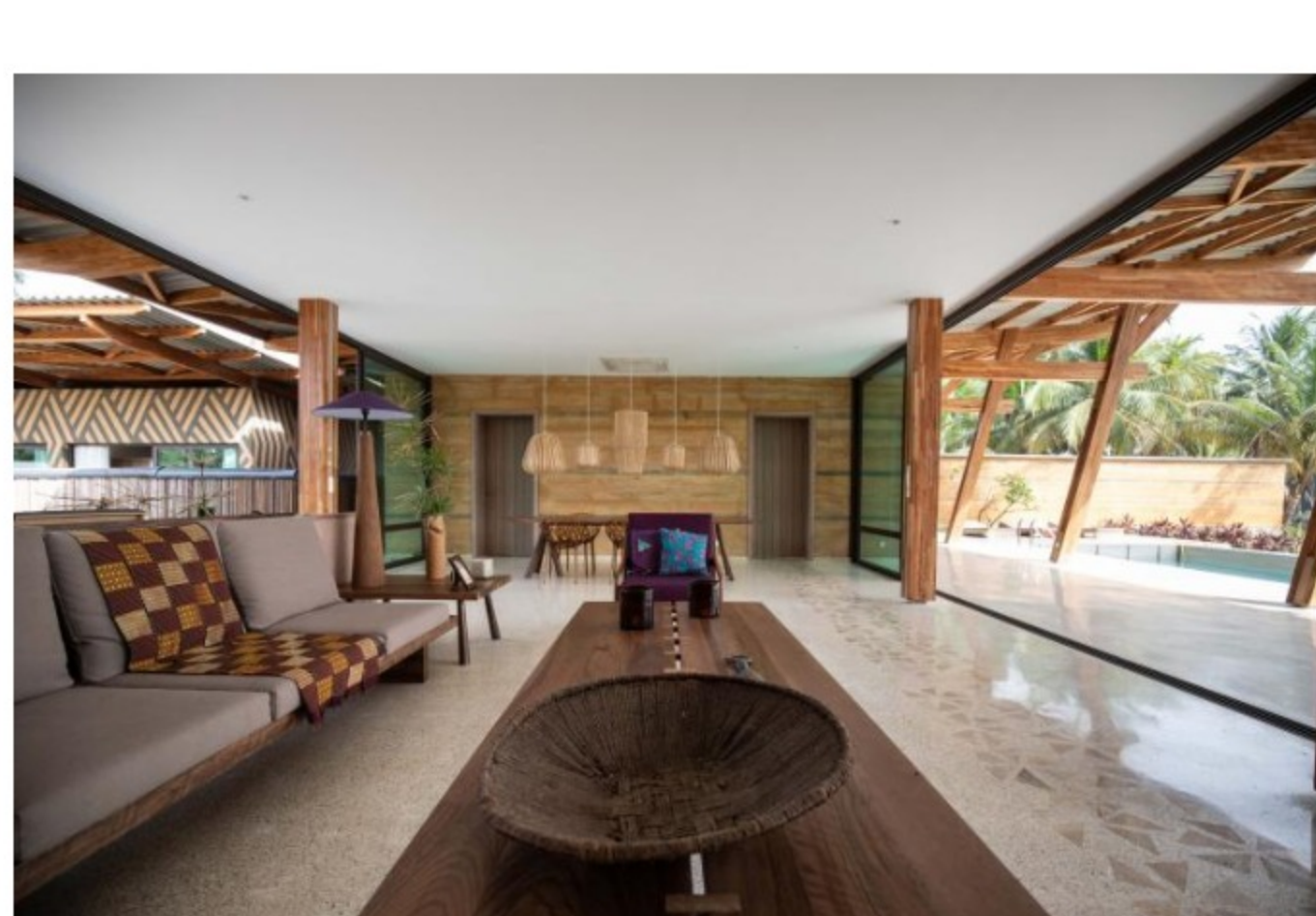
The new house is built close to the waterfront of one of the many lagoons, channels and islets that perforate this stretch of coast. The clients' family is large and there is ample space for entertaining, with a main pavilion housing the living room and kitchen and two bedrooms and a secondary pavilion with guest accommodation.

Passive ventilation and simple construction methods allows the occupants to make the most of inside-outside living ('a privilege of living in the tropics') with long sliding windows that let air from the lagoon flow through the house. The architects also specified and designed much of the furniture, creating a complete design synthesis.

Throughout their career, Koffi & Diabaté have dovetailed local conditions with carefully considered aesthetics, creating modern architecture that is lightweight, high performance and low energy. In recent years the firm has worked in several other African countries and their ongoing commitment to quality has led to long-term relationships with contractors and clients. Larger projects include offices, hotels and even churches, all helping the studio's global reputation to continue to grow. ★



Photography: Client



INFORMATION  
[koffi-diabate.com](http://koffi-diabate.com)

RESIDENTIAL ARCHITECTURE

HOUSES

AFRICAN ARCHITECTURE

NEWS

ARCHITECTS DIRECTORY 2020